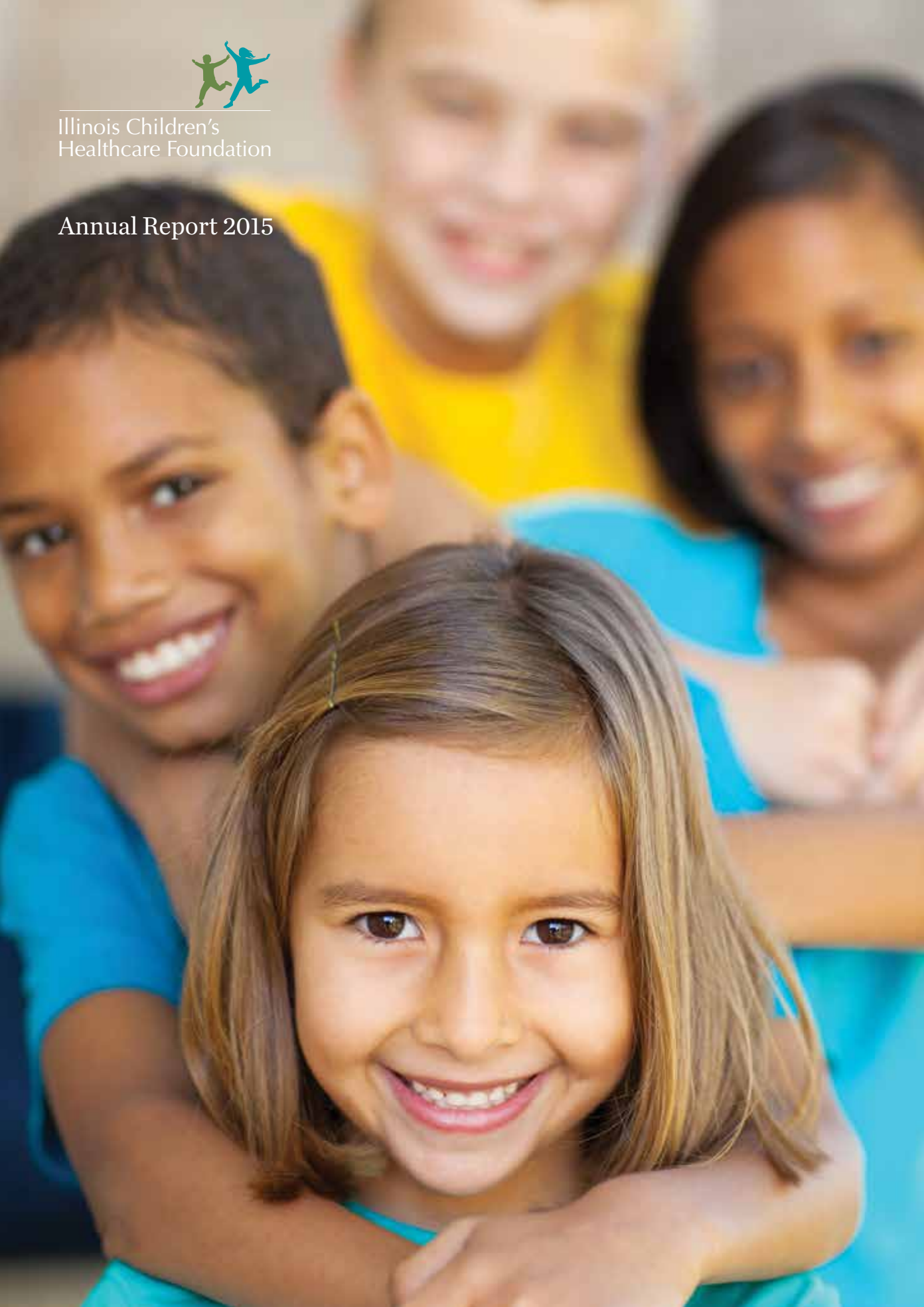




Illinois Children's  
Healthcare Foundation

Annual Report 2015



## Dear Friends,

In 2015 we acted and believed. We planned and dreamt.

Illinois Children’s Healthcare Foundation (ILCHF) acted in numerous ways, including completion of the first three stops on the Innovation & Collaboration Tour (ICT). The ICT is a multi-year statewide initiative involving six “tour stops” in designated regions of the State. Through the ICT, ILCHF is seeking innovative and collaborative approaches to address the healthcare needs of children. In 2015 ILCHF had the pleasure of collaborating with the listed partners at the following tour stops:

- EAST CENTRAL ILLINOIS—meeting in Champaign
  - > Partners: Community Foundation of Central Illinois, SmileHealthy, and United Way of Champaign County
- SOUTHERN ILLINOIS—meeting in Mount Vernon
  - > Partner: Southern Illinois Community Foundation
- NORTHERN ILLINOIS—meeting in Rockford
  - > Partners: Crusader Clinic and the Community Foundation of Northern Illinois

The purpose of the ICT tour is two-fold: to have an interactive conversation with stakeholders to increase the collective understanding of the local and regional healthcare assets and needs of children; and to introduce the ICT funding opportunity of one year grants of up to \$100,000. In connection with these first three tour stops, ILCHF believed in the capacity of applicants to creatively and collaboratively improve the lives of children and families and invested \$1.28 million in 15 programs representing a variety of projects from Mindfulness in Schools, to Food as Medicine, to the opening of a clinic inside a YWCA.

Further action, supported by our belief in the importance of building and sustaining systems of care for children’s mental health, resulted in an additional investment of \$680,000 in the *Children’s Mental Health Initiative: Building Systems of Care, Community by Community* (CMHI). Each of the four participating communities received a grant to help strengthen their sustainability plans as they continue to coordinate and integrate children’s mental health care into community-based settings. In its fourth year of implementation, the four projects screened more than 35,000 children for behavioral risk factors. Additionally, ILCHF published “An Investment in Our Future”, CMHI’s mid-project report describing early accomplishments and lessons learned. The report is available on our website.



ILCHF, Delta Dental of Illinois Foundation and Michael Reese Health Trust each believe in the importance of quality oral health care for all Illinoisans and data driven decision making. In this context, and in the absence of comprehensive data regarding oral health in Illinois, together with these partners, we sought proposals to conduct the first Statewide Oral Health Assessment (SOHA). Sinai Urban Health Institute (Sinai) and Rob Paral & Associates (Paral) were the successful applicants for this unique project. Over the course of a year, Sinai, Paral and the funders will establish and work with an Advisory Committee comprised of oral health stakeholders from across the state, to design and implement an assessment that will quantify and describe the status of the oral health workforce, the oral health safety net system and challenges associated with oral health education and access to care.



In terms of planning, ILCHF provided three grants totaling \$275,000 grounded in a belief that a system with a greater understanding of Early Childhood Mental Health Consultation (ECMHC), Adverse Childhood Experiences (ACEs), and the effective use and implementation of an advocacy agenda will result in improved health for children and families. A planning grant to support the work of the Illinois Children’s Mental Health Partnership to develop a standardized model for ECMHC is the first phase of a project aimed at evaluating the impact of ECMHC on children and families. ILCHF is pleased to co-fund this work initiated by the Irving Harris Foundation.

Health & Medicine Policy Research Group received a grant to gather, analyze and share information regarding the impact of ACEs on children’s health care for the purpose of recommending policies and best practices for child-serving systems across the state. The Sargent Shriver National Center on Poverty Law is undertaking a unique approach with seven of ILCHF’s children’s mental health grantees to build their capacity, individually and collectively to engage in effective and impactful advocacy around children’s mental health.

We planned and we dreamt. ILCHF’s vision is, “Every child in Illinois grows up healthy”. In 2015, ILCHF completed a year-long strategic planning process which culminated not only in a plan, but an achievable dream aligned with our mission. Our short term goals include increasing access to evidence-based oral and mental healthcare and screenings for children with a focus on integrating care; initiate grantmaking in targeted areas of emerging and/or unmet need in children’s healthcare; and, to share knowledge and advocate for a holistic, comprehensive approach to children’s health.

Our long term goals were captured as “ILCHF Healthy Children 2025” and states as follows:

To enable every child in Illinois to grow up healthy, ILCHF, in collaboration with committed partners, will work to implement the following components of a comprehensive, holistic system of children’s health care:

1. Universal access to evidence-based primary, oral, and mental healthcare for children with an emphasis on fully integrated care.
2. Universal evidence-based screenings for oral and mental health for children.
3. The alleviation of children’s healthcare disparities.
4. Life-cycle health & wellness education for all children and caregivers.
5. Cross-disciplinary education of all healthcare providers.

We know these goals are ambitious, but they are attainable—if we all work together. As the Foundation and its partners continue to act, dream, plan and believe in the pursuit of improving the health and wellbeing of our children and families, we invite you to experience, inform, and follow our work via this report, and by finding us online at [www.ilchf.org](http://www.ilchf.org). Please join us as we work together “to accomplish great things” and achieve our vision that every child in Illinois grows up healthy.

Sincerely,

J. Kevin Dorsey, M.D., Ph.D.  
Chair of the Board

Heather Higgins Alderman  
President



OUR VISION

Every child in Illinois grows up healthy.

OUR MISSION

Illinois Children’s Healthcare Foundation is committed to cultivating, supporting, and promoting initiatives that improve the health and wellness of children in Illinois.

**2015 GRANT RECIPIENTS**

**Adler University**

*Mental Health Services in Restorative Justice Hubs: A Pilot Program*  
Chicago, IL  
\$50,000

**CCR&R—John A. Logan College on behalf of Southern Illinois Coalition for Children and Families**

*Southern Illinois Coalition for Children and Families—Developmental Screening Initiative*  
Carterville, IL  
\$99,000

**Centerstone**

*Community School Project*  
Carterville, IL  
\$87,155

**Central Illinois Foodbank, Inc.**

*Giving Tuesday Matching Grant*  
Springfield, IL  
\$20,890

**Children’s Home & Aid Society of Illinois**

*The Doula Program*  
Chicago, IL  
\$87,715

**Christian School Services of Illinois dba Caritas Family Solutions**

*MST—Redeploy*  
Belleville, IL  
\$82,650

**Communities United**

*Safe Schools Consortium*  
Chicago, IL  
\$100,000

**Community Foundation of East Central Illinois**

*“Ready, Set, Grow”!*  
Champaign, IL  
\$57,380

**Eastern Illinois Foodbank**

*Giving Tuesday Matching Grant*  
Chicago, IL  
*Illinois Service Area: Champaign, Clark, Clay, Coles, Crawford, Cumberland, DeWitt, Douglas, Edgar, Ford, Iroquois, Jasper, Livingston, McLean, Moultrie, Piatt, and Vermillion counties*  
\$25,000

**Erie Family Health Center**

*Erie Teen and Young Adult Health Center*  
Chicago, IL  
\$200,000

**Erie Family Health Center**

*Children’s Mental Health Advocacy Planning Project*  
Chicago, IL  
\$5,000

**FHN Jane Addams Family Counseling Center**

*Shared Care*  
Freeport, IL  
\$100,000

**Greater Chicago Food Depository**

*Giving Tuesday Matching Grant*  
Chicago, IL  
\$25,000

**Health & Medicine Policy Research Group**

*Developing an Agenda to Address ACEs in Illinois*  
Chicago, IL  
\$125,000

**Heartland Health Outreach**

*Dissemination of Healthy Smiles, Healthy Growth 2013-2014*  
Chicago, IL  
\$1,500

**Illinois State University Psychological Services Center**

*Integrated Behavioral Health Training Pipeline*  
Normal, IL  
\$99,000

**Kreider Services, Inc.**

*Florissa*  
Dixon, IL  
\$99,940

**LifeLinks**

*MAP IT (Mobile Appropriately Provided Individualized Treatment)*  
Mattoon, IL  
\$99,017

*Since it began making grants in 2004, ILCHF has awarded over \$67 million to organizations throughout the state that share our vision and commitment.*

**Livingston County Commission on Children & Youth**

*Children's Mental Health Sustainability Grant*  
Pontiac, IL  
\$175,000

**Lutheran Social Services of Illinois**

*Parenting Educator and Advocate for Parents of Children in Foster Care or at risk of entering Foster Care*  
Des Plaines, IL  
\$100,000

**Mental Health Centers of Central Illinois**

*Children's Mental Health Advocacy Planning Project*  
Springfield, IL  
\$5,000

**Mental Health Centers of Central Illinois**

*Children's MOSAIC Project Sustainability Grant*  
Springfield, IL  
\$174,400

**Metropolitan Family Services**

*Children's Mental Health Advocacy Planning Project*  
Chicago, IL  
\$5,000

**Morrison Community School District #6**

*Morrison School Student Assistance Center*  
Morrison, IL  
\$100,000

**NAMI Metro-Suburban**

*Youth Mental Health First Aid*  
Oak Park, IL  
\$5,000

**Northern Illinois Food Bank**

*Giving Tuesday Matching Grant*  
Geneva, IL  
*Illinois Service Area: Boone, DeKalb, DuPage, Grundy, Kane, Kankakee, Lake, McHenry, Ogle, Stephenson, Will and Winnebago counties*  
\$25,000

**Northwestern University**

*Examining the Impact and Sustainability of the Mothers and Babies Course*  
Evanston, IL  
\$330,685

**Peoria Area Food Bank**

*Giving Tuesday Matching Grant*  
Peoria, IL  
*Illinois Service Area: Fulton, Mason, Peoria, Tazewell and Woodford counties*  
\$9,222

**Promise Healthcare**

*Food as Medicine*  
Champaign, IL  
\$98,730

**Quincy Public Schools, District 172**

*Adams County Children's Mental Health Partnership Sustainability Grant*  
Quincy, IL  
\$154,821

**River Bend Food Bank**

*Giving Tuesday Matching Grant*  
Davenport, IA  
*Illinois Service Area: Bureau, Carroll, Hancock, Henderson, Henry, Jo Davies, Knox, LaSalle, Lee, Marshall, McDonough, Mercer, Putnam, Rock Island, Stark, Warren and Whiteside counties*  
\$12,450

**Sargent Shriver National Center on Poverty Law**

*Children's Mental Health Advocacy Planning Project*  
Chicago, IL  
\$80,000

**Sinai Urban Health Institute**

*Illinois Statewide Oral Health Assessment*  
Chicago, IL  
\$135,384

**Sinnissippi Centers Inc.**

*Community that Cares Sustainability Grant*  
Dixon, IL  
\$175,000

**Sinnissippi Centers Inc.**

*Children's Mental Health Advocacy Planning Project*  
Dixon, IL  
\$5,000

**St. Louis Area Foodbank**

*Giving Tuesday Matching Grant*  
St. Louis, MO  
*Illinois Service Area: Calhoun, Clinton, Franklin, Jackson, Jersey, Madison, Monroe, Perry, Randolph, St. Clair, Washington, and Williamson counties*  
\$7,110

**The Children's Clinic sponsored by Oak Park River Forest Infant Welfare Society**

*Children's Mental Health Advocacy Planning Project*  
Oak Park, IL  
\$5,000

**The Mindful Teacher Foundation**

*2015-16 MTT/CCW Launch: Stratton & USD 116*  
Champaign, IL  
\$25,447

**Transitions of Western Illinois**

*Children's Mental Health Advocacy Planning Project*  
Quincy, IL  
\$5,000

**Tri-State Food Bank, Inc.**

*Giving Tuesday Matching Grant*  
Evansville, IN  
*Illinois Service Area: Alexander, Edwards, Gallatin, Hamilton, Hardin, Johnson, Lawrence, Massac, Pope, Pulaski, Richland, Saline, Union, Wabash, Wayne, and White counties*  
\$5,200

**Warren County Health Department**

*Healthy Smiles in Warren County—Warren County Dental Clinic*  
Monmouth, IL  
\$400,000

**Urbana Neighborhood Connections Center**

*H.O.P.E. (Helping Other People Evolve) Challenge*  
Urbana, IL  
\$77,850

**Voices for Illinois Children**

*Integrated Early Childhood Mental Health Consultation Model and Capacity Building Project*  
Chicago, IL  
\$33,720

---

2015 Grant approval date beginning January 1, 2015 thru December 31, 2015

## FINANCIAL HIGHLIGHTS

### Statement of Financial Position

	December 31, 2015	December 31, 2014
<b>ASSETS</b>		
Cash	\$ 1,594,754	\$ 576,414
Investments, at fair value	127,407,792	137,004,803
Other assets	32,484	29,418
<b>Total assets</b>	<b>129,035,030</b>	<b>137,610,635</b>
<b>LIABILITIES</b>		
Grants payable	3,391,549	5,809,899
Other liabilities	236,494	191,056
<b>Total liabilities</b>	<b>3,628,043</b>	<b>6,000,955</b>
Unrestricted net assets	125,406,987	131,609,680
<b>Total liabilities and net assets</b>	<b>\$129,035,030</b>	<b>\$137,610,635</b>

### Statement of Activities

	2015	2014
Investment income, net	\$ (1,627,489)	\$ 7,586,015
Other income	30	—
<b>Total net revenue</b>	<b>(1,627,459)</b>	<b>7,586,015</b>
Grants approved, net	3,522,592	4,694,728
All other expenses, net	1,052,642	943,249
<b>Total expenses</b>	<b>4,575,234</b>	<b>5,637,977</b>
Change in net assets	(6,202,693)	1,948,038
Grants paid during the year	\$ 5,655,721	\$ 5,106,013

For a copy of the 2015 audited financial statements, 2015 Form 990PF, or a complete and detailed listing of our 2015 program investments, please visit our website at [www.ilchf.org](http://www.ilchf.org) or contact Nedraae Hunt at 630.571.2555.

## OUR HISTORY

*ILCHF was formed in December 2002 through an action of then Attorney General Jim Ryan and an Illinois insurance carrier. This action and a settlement of approximately \$125 million established the only private foundation focused solely on the health needs of children in Illinois.*

## BOARD OF DIRECTORS As of December 31, 2015

---

### Officers

#### BOARD CHAIR

J. Kevin Dorsey, MD, PhD  
*Dean Emeritus, Southern Illinois University School of Medicine*

#### VICE CHAIR

Michael L. Parker  
*Retired Senior Vice President Liberty Mutual Middle Markets*

#### TREASURER

Floyd D. Perkins  
*Attorney at Law, Partner, Nixon Peabody; Former Bureau Chief, Charitable Trust Division, Illinois Attorney General's Office*

#### SECRETARY

Terry F. Hatch, MD  
*Professor of Clinical Pediatrics, Southern Illinois University School of Medicine; Emeritus Associate Professor, University of Illinois College of Medicine*

### Directors

Charles E. Box  
*Past Chair, Illinois Commerce Commission; Retired Mayor, Rockford*

Philip S. Cali  
*Retired Executive Vice President Operations, NICOR, Inc.*

Louise Coleman, EdD  
*Retired Superintendent of Schools, Joliet Public Schools District 86*

Peter F. Flynn, PhD  
*Retired Superintendent of Schools, Freeport School District 145*

Kathy Halloran  
*Retired Executive Vice President, NICOR, Inc.*

John C. Jasinski  
*Business Resource Manager, RCD, Caterpillar, Inc.*

Nicholas Panomitros, DDS, JD, MA, LLM  
*Dentist, Private Practice; Educator; Attorney*

Ruth Rosenthal, MD  
*Psychiatrist, Private Practice*

Christine H. Rosso, Esq.  
*Former Chief of Public Interest Division, Illinois Attorney General's Office*

Kay L. Saving, MD  
*Medical Director, Children's Hospital of Illinois at OSF St. Francis Medical Center; Professor of Pediatrics, University of Illinois College of Medicine, Peoria*

Billie Wright Adams, MD  
*Retired Pediatrician*

### Directors Emeriti

Peter E. Doris, MD  
*Retired Clinical Professor of Radiology and Medicine, University of Chicago*

C. William Pollard  
*Chairman Emeritus, The ServiceMaster Company; Chairman, FairWyn Investment Company*

Jim Ryan  
*Distinguished Fellow, Benedictine University; Former Attorney General, State of Illinois*

---

### Staff

Heather Higgins Alderman  
*President*  
heatheralderman@ilchf.org

Bob Egan  
*Senior Program Officer*  
bobegan@ilchf.org

Nedranae Hunt  
*Administrative Manager*  
nhunt@ilchf.org

Yemisi Odedina  
*Associate Program Officer*  
yemisiodedina@ilchf.org

Amy Starin, PhD  
*Senior Program Officer*  
amystarin@ilchf.org



Illinois Children's  
Healthcare Foundation

1200 Jorie Boulevard

Suite 301

Oak Brook IL 60523

[www.ilchf.org](http://www.ilchf.org)